

PYRAMID

emergency services division



emergency operations



emergency facilities





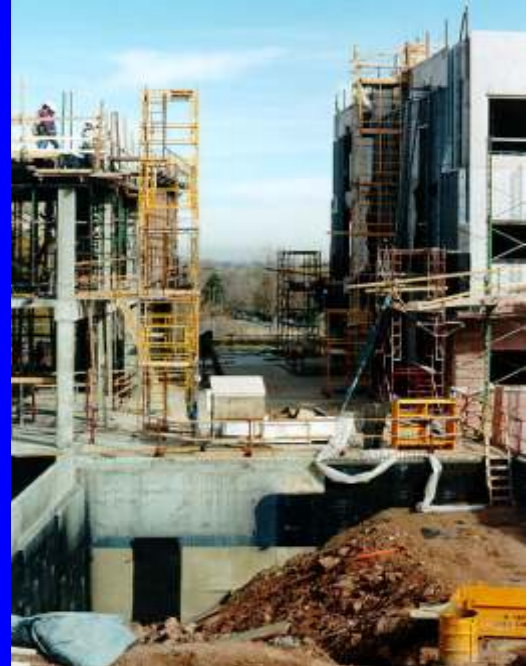
preparedness



response

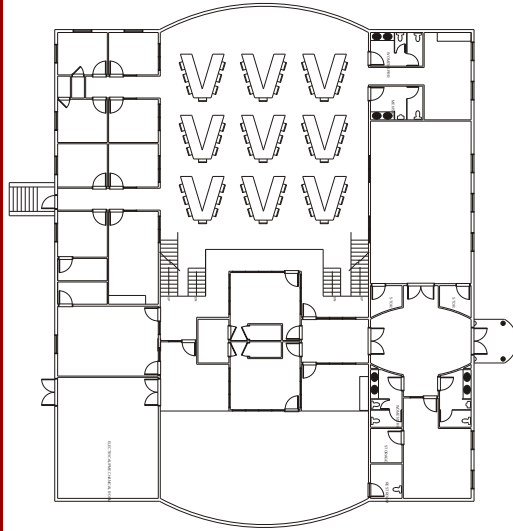


recovery



The farther back you can look, the farther forward you are likely to see.

Winston Churchill knew the benefits of learning from the past. Pyramid designs and engineers each project by learning from the past through case studies. Emergency preparedness begins with the design and engineering of emergency service facilities that cannot be compromised. The last thing that should ever be of concern is the emergency service building. Pyramid's staff members have achieved recognition in emergency service facilities including; emergency operation centers (EOC), emergency communication centers, police stations, fire stations, as well as emergency shelters.



- Emergency Operations Center
- Emergency Communications Center (dispatch)
- Emergency Management Plan
- Primary & Alternate EOC's
- Event Scenarios
 - Natural Event
 - Human Event
 - Technological Event

emergency preparedness

Government is not reason, it is not eloquence, it is force; like fire, a troublesome servant and a fearful master. Never for a moment should it be left to irresponsible action.

George Washington's understanding of the role of government was to protect and serve the people. The actions that responders take during events are responsibility and caring for the people of the area. Pyramid will provide a place that allows for responsible emergency logistics to occur. The emergency service facilities that are designed and engineered by Pyramid provide the best location for centralized emergency logistics.



- Tornado Proof Structure FEMA 361
- Fire Resistant Construction
- Earthquake Resistant Construction
- Emergency Power Systems
- Chemical/Biological Filter Systems (CPS)
- Lighting Protection System
- Mobil Phone Amplifier System
- Security Access Systems
- Pressurized Facility

emergency response

This is not the end of anything, this is the beginning of everything.

When Ronald Reagan said this he was talking about a nation that must look ahead and always better itself. Pyramid recognizes that after the "response" the next step is recovery. Our facilities are designed to assist and be useful for a full recovery of the area. After the response, the emergency service facility becomes a central location for recovery operations. This means organizing a new staff in the facility that will orchestrate the rebuilding efforts of the area. Pyramid will provide sustainable facilities that service the local communities.



- Staff Recovery
- Facility Recovery
- Operations Recovery
- Service Continuation Plan
- Post-Emergency Structural Analysis
- Essential Facilities Recovery
- Public Works Recovery
- Service Centers

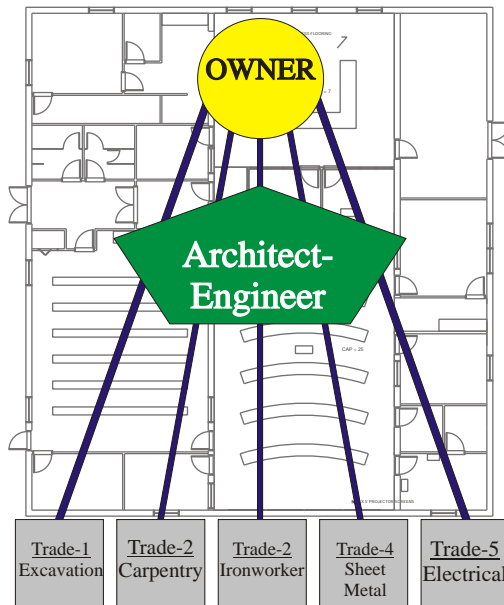
emergency recovery

Pyramid Architecture / Engineering & Construction Administration, Inc. is a multi-discipline professional company with projects located throughout the nation. Pyramid's approach is to develop a close one-on-one relationship with the client. This helps us understand the nature of the project, which results in asking and answering the right questions during the design and engineering process.

phone
317-272-9426

fax
317-272-9427

website
www.pyramidarch.com



Architecture
Engineering
Planning
Assessments
Security Design
Emergency Facilities
Building Commissioning
Construction Administration

professional
administration
services

Total program approach

The "total program approach" for disaster/emergency management is incorporated into the NFPA 1600 standard. The document is concerned with preparedness, response, and recovery. Pyramid's approach to emergency service facilities utilizes this approach. The facilities are designed around the operations that will occur during the three modes; preparedness, response, and recovery. Pyramid incorporates the informational response systems that must be utilized during an event into the design of the facility. NOTHING IS LEFT FOR CHANCE!



Centralized Operations Center

Levels of Operations

Levels of Emergency

Facility Features

Survivability

Security

Sustainability

Interoperability

Flexibility

emergency
operations

It is not what you know, but what questions you ask

Albert Einstein believed this questioning showed the true depth of a person's abilities. With Pyramid's extensive experience with emergency service facilities, we know the right questions to ask. During an emergency or disaster, the public looks to the local emergency service facilities—fire department, police station, jail, or dispatch center—to respond, and the last thing the responding department needs is a facility that doesn't function. Our dispatch centers meet FEMA tornado-proof standards, our fire stations are designed for optimal response time, and our jails and police stations ensure the safety and security of the



E911 Centers

Fire Stations

EMS Centers

Police Stations

Trauma Centers

Haz-Mat Facilities

Emergency Service Shelters

Emergency Operations Centers
(EOC's)

emergency
facilities